



Ecology in Classrooms & Outdoors

## October Newsletter

*Ecology in Classrooms and Outdoors inspires students to care for nature and their communities with hands-on science education and climate action.*

### From the Executive Director

Dear ECO supporters & friends,

Since 2005, we've built a community of students that care deeply for nature - 32,000 strong! These students are calling on us to take climate action. ECO is responding by creating a Climate Action program featuring biodiversity conservation, environmental justice, consumption & waste, and renewable energy to achieve actionable change.



Your financial support is critical at this time to help ECO get Climate Action curriculum into the schools. We are here to give students and teachers the tools they need to face these challenges head on.

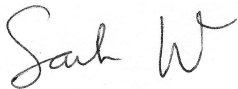
I'm proud of what we've accomplished together and the community of students we've mentored who want Climate Action Now!

## There are some exciting new ways to support ECO this year:

- Make a gift to ECO through Willamette Week's Give!Guide campaign and receive some fabulous incentives. The campaign kicks off November 1st and lasts through the end of the year. Donate on the first day of the campaign, November 1st, and be entered to win tickets to the Portland Timbers' game on Sunday November 7th.
- If you do not plan to itemize your deductions in 2021, consider a year end gift from your IRA. If you are 70 ½ or older by the end of the year, you will pay no taxes on your gift! If you are 72 or older, your gift may also help you meet your minimum distribution.
- Purchase ECO's beautiful Holiday Tribute card for your family, friends, and colleagues. This lovely tribute features a stunning photo by Wasim Muklashy, nature photographer and ECO Board Member. Cards are available by donation and you can learn more about them at [www.ecologyoutdoors.org/holiday-cards](http://www.ecologyoutdoors.org/holiday-cards)
- Make a direct gift or join our monthly giving program at [www.ecologyoutdoors.org/donate](http://www.ecologyoutdoors.org/donate)

Please feel free to contact our Development Team (see below) and they can help you make your donation the most impactful one yet!

With appreciation,



Sarah Woods  
Executive Director, Acting

---



## ECO Holiday Tribute Card Program



To be part of this wonderful program, please visit our website.

ECO Holiday  
Cards

*Thank you!*

## Meet Board Member Bethany Shetterly Thomas



As we begin to move into year-end giving, we are so thankful to have Bethany Shetterly Thomas, Co-Founder of ECO, as Chair of the Development Committee of the Board. Over the last 15 years, Bethany has served many roles within the organization and her guidance and wisdom is a gift to our Development Team.

One of Bethany's passions is Earth Day Oregon and she heads the steering committee, which under her leadership, created a statewide campaign that directs attention and donations to nonprofits whose work advances the Sustainable Development Goals set for forth by the United Nations.

Bethany and her husband, Matt, are raising three active boys, ages 7, 10, and 12. The kids are all relieved to be back in school in-person and once again able to participate in activities like cross country, soccer, gymnastics, and music lessons.

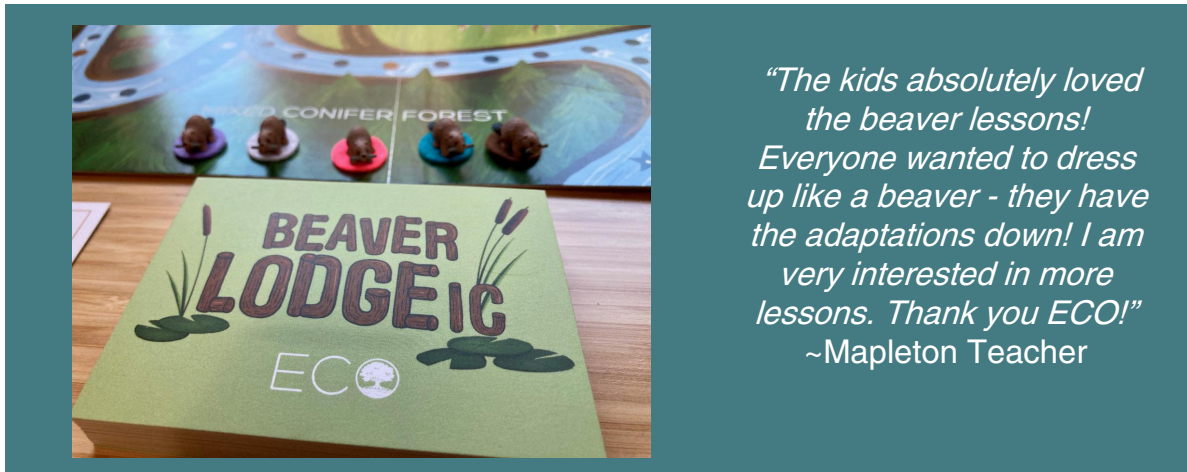
Bethany will be working closely with Monica Smiley, Director of Development and Communications and Wendy Mitchell, Senior Development Advisor, on Giving Tuesday and Willamette Week's Give!Guide. The theme for year-end is Climate

Action so Bethany and her family will continue to support ECO, manage Earth Day Oregon's board, and look for individual actions to take like driving electric vehicles, purchasing energy efficient appliances, staying informed about environmental legislation and more.

When time allows, Bethany enjoys running, hiking, reading, and writing music.

## ECO Delivers Curriculum Kits to Mapleton Elementary

In October ECO delivered Place-Based Units (PBUs) - Beaver Adaptations and Beavers as Engineers to Mapleton Elementary in Mapleton, Oregon, west of Eugene. The units integrate lessons in science, technology, engineering, art and math (STEAM) inspiring students to learn about the ecology of the American beaver, a keystone species.



Mapleton's 3rd/4th and 5th/6th grade classroom teachers will be equipped to deliver hands-on, standards-aligned lessons with their kits. PBUs can be integrated into a teacher's existing curriculum, or support outdoor enrichment activities such as field trips or Outdoor School. Paired with our *ECO Adventures* video series and virtual lesson components, PBUs can be taught either in-person or online.

Place-Based Units expand ECO's reach way beyond our field trips. The value is that we can directly empower more teachers to bring ecology to all corners of Oregon and beyond.

This project is the result  
of a partnership with  
Mapleton School District  
with financial support  
from the Western Lane

Community Foundation  
and donors, like you.  
*Thank you!*



## Learn at Home Lesson



*October's lesson is Layers of the Forest and will be released on the 25th. Students head outdoors and observe a forest habitat by sketching the layers, including the living things within them.*

The ECO educators have created a series of activities for use at school, home, or to view on a mobile device as you explore the outdoors!

Designed for students of all ages, ECO lessons include ideas for building your identity as a scientist and exploring using your senses - with very little materials and set-up required.

[Visit our website](#)

Sign up to receive one lesson every month directly from ECO.

## Thank You Donors!

**Wendy Mitchell**  
*Senior Development Advisor*  
[Wendy@ecologyoutdoors.org](mailto:Wendy@ecologyoutdoors.org)

**Monica Smiley**  
*Development & Communications Director*  
[Monica@ecologyoutdoors.org](mailto:Monica@ecologyoutdoors.org)



Luka & Annika, age 7

